

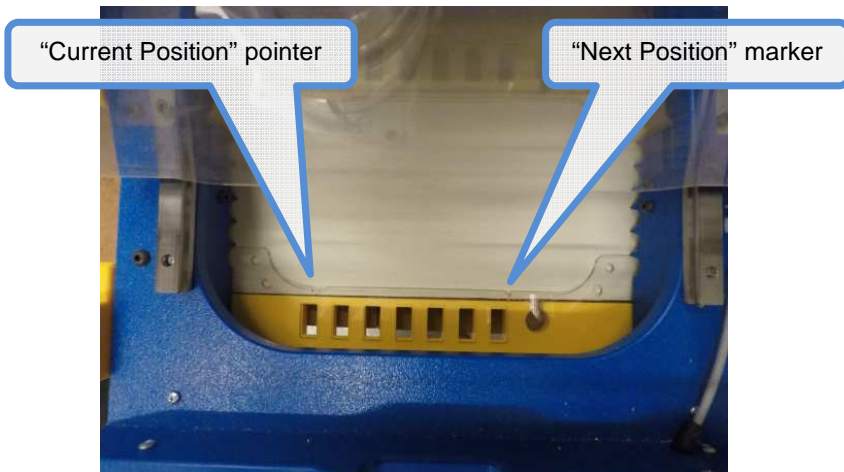


## Cutting Tiled Toolpaths with the Handibot Large Sheet Tool

- 1 The Handibot Large Sheet Tool is designed to clamp onto pieces of material up to 24" wide. It's 6" X axis allows it to complete a cut on a full 24" x 48" sheet of wood in just 8 tiles. If you haven't already—read the guide on setting up tiled toolpaths for your handibot before continuing here.



- 2 Inside the front area of the tool, there are a few features that assist with movements of the tool between each tile in a job.



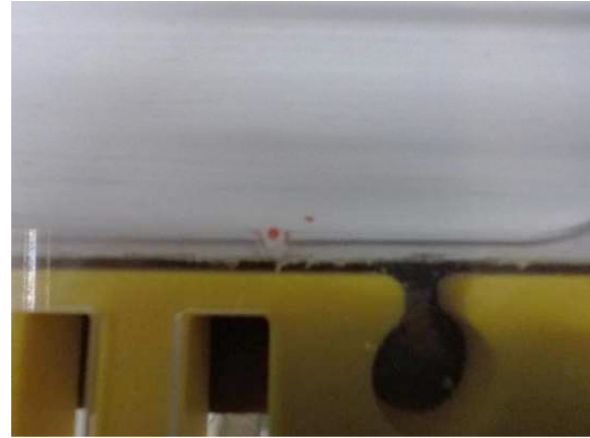
- 3 During cutting, the tool frame should always be clamped to the material being cut—to prevent shifting during cutting. The position of this clamp can be adjust by loosening the two screws holding it onto the aluminum extrusion—and sliding it into place.



- 4** After your first cut in a series of tiled cuts—make a mark on the material through the groove of the “next position” marker.



- 5** Choose a color that contrasts with the material so that it will be easy to see



- 6** Release the two clamps on the back of the tool so that it can slide freely along the material.



- 7** Slide the tool until the “current position” pointer is lined up with the mark that you made before releasing the clamps on the frame. This will ensure that you’ve made an exact 6” move along the material.



8

Depress the clamps to lock the tool in place once more before you begin your next cut. With each tile, repeat the mark-and-move process until you've completed your job.

